

FICHE TECHNIQUE

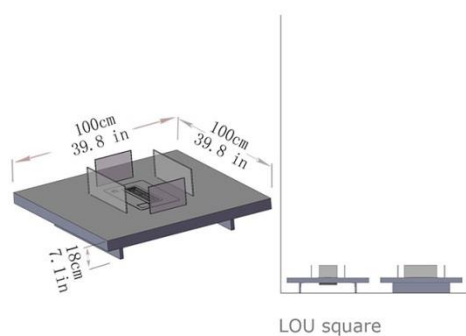
LOU Coffee Table with Intelligent Ethanol Insert



1

1. Models & dimensions
2. Colors
3. Technical data
4. Operating procedure

1. Models & dimensions

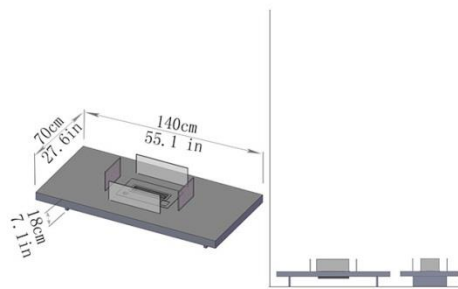


LOU SQ (square)

Dimensions W/H/D 100/100/18 cm - 39,8/39,8/7,1 in
 Output: 2 700 W (9 000 BTU)
 Capacity of the tank: 2,25 L (0,6 Gal)
 Consumption: 0,4 liter/hour (0,11 Gal/hour)
 Weight: 35 kg (77 Lbs.)

FICHE TECHNIQUE

LOU Coffee Table with Intelligent Ethanol Insert



LOU REC (rectangular)

Dimensions W/H/D 140/70/18 cm – 55,1/27,6/7,1 in

Output: 2 700 W (9 000 BTU)

Capacity of the tank: 2,25 L (0,6 Gal)

Consumption: 0,4 liter/hour (0,11 Gal/hour)

Weight: 35 kg (77 Lbs.)

2. Colors

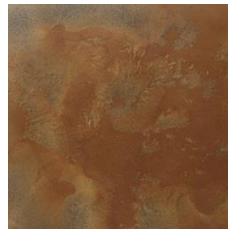
Satin Black



Satin White



Corten Effect



Natural Wood



FICHE TECHNIQUE

LOU Coffee Table with Intelligent Ethanol Insert



3



FICHE TECHNIQUE

LOU Coffee Table with Intelligent Ethanol Insert

1. Technical Data



Controls

Remote control, On/off button

Dry contact for home automation applications & remote control via Smartphone or remote commands



Ignition - Power

Automatic and secured ignition through low-voltage electronic induction electrodes

Feed pumps with high-tech membranes



Security

Electronic sensors that automatically halt the unit in case of malfunction

(CO², heat, levels, tank gauge, etc.)



Standards

All AFIRE devices comply with the following safety standards:

CE (Europe), FCC (USA), IC (Canada)

3. Operating procedure

A. Power supply

Connect the provided 12V adapter



B. Tank filling

Only use denatured ethanol 95 – 97%.

Press on the button **2**

The door is unlocked, open the door, remove the cap and fill the tank with a funnel.

When the tank is full, a beep warns you and a message is displayed on the LCD screen.

Put the cap back on and close the door of the tank.

After a few seconds the door will be automatically locked



Never fill the burner directly, fill the ethanol tank

1. Press on the remote control, the on/off switch (1) or the remote button to ignite or switch off the burner



on/off switch



tank opening **2** **1** on/off switch



dry contact for home automation